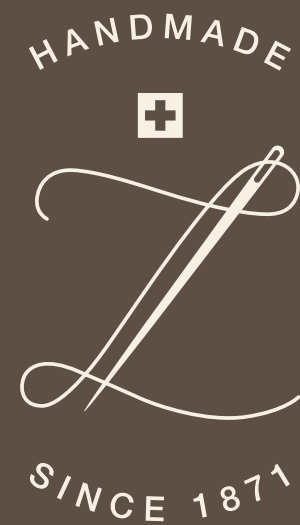


THE WORLD'S FINEST UNDERWEAR
Handmade in Switzerland since 1871



LADIES
SEASONAL
COLLECTION
AW 2020/2021

zimmerli
of Switzerland



Schon bei der ersten Berührung sprechen die wertvollen Qualitäten und die über Generationen weitergegebene Handwerkskunst von Zimmerli of Switzerland direkt zu Ihrer Haut. Mit allen Sinnen lässt sich das einzigartige Wohlgefühl unmittelbar erleben.

Jedes Stück aus unserer Manufaktur ist ein handgefertigtes Unikat, das eine neue Stufe der Nachhaltigkeit erreicht: Schadstofffrei und gesundheitlich unbedenklich, sind sämtliche Qualitäten nach STANDARD 100 by OEKO-TEX® zertifiziert. Als Partner der MADE IN GREEN by OEKO-TEX® Community erfüllt Zimmerli of Switzerland strengste soziale und ökologische Kriterien und garantiert dem Kunden volle Transparenz über alle Produktionsstufen.

At very first touch, the exquisite materials and generations of manual craftsmanship embraced by Zimmerli of Switzerland speak directly to your skin. The unique feeling of well-being can be experienced with all the senses.

Every piece that leaves our manufactory is handmade and unique, reaching a new level of sustainability: free of harmful substances with no risk to human health, all materials are certified in accordance with STANDARD 100 by OEKO-TEX®. As a partner of the MADE IN GREEN by OEKO-TEX® Community, Zimmerli of Switzerland meets the strictest social and ecological requirements and guarantees its customers complete transparency across all production stages.





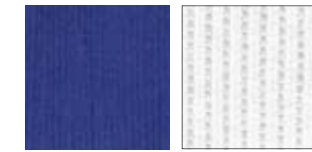
RICHELIEU



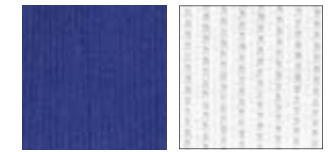
207-2800 Spaghetti Top
100% cotton
Sizes: S-L



207-2801 Top
100% cotton
Sizes: S-L



451 clematis blue Essential 01 white



451 clematis blue Essential 01 white



207-2802 Negligé
100% cotton
Sizes: S-L



207-2804 Briefs
100% cotton
Sizes: S-L



451 clematis blue Essential 01 white



451 clematis blue Essential 01 white

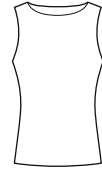
DELIVERY WINDOW 1: 01.07.2020

Order deadline: 28.02.2020*

Daywear p. 5/6/9/10/14
Nightwear p. 6/9/12
Loungewear p. 14/15

* Später eingehende Bestellungen werden unter Vorbehalt angenommen/Orders received after this date will be accepted under reserve.

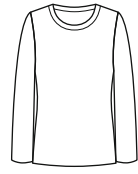
SEA ISLAND



286-2760 Top
100% Sea Island cotton
Sizes: S-XL



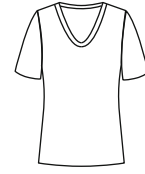
Essential
01 white 451 clematis blue



286-2762 Shirt Long Sleeve
100% Sea Island cotton
Sizes: S-XL



Essential
01 white 451 clematis blue



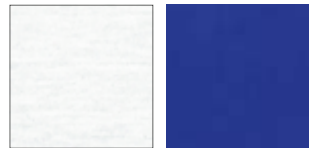
286-2764 Shirt Short Sleeve V-Neck
100% Sea Island cotton
Sizes: S-XL



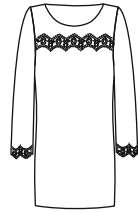
01 white 451 clematis blue



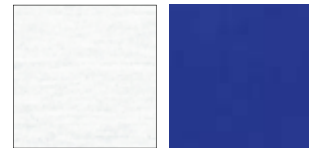
286-4139 Shirt Long Sleeve
100% Sea Island cotton
Sizes: XS-XL



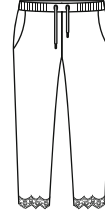
01 white 451 clematis blue



286-4140 Sleepshirt Long Sleeve
100% Sea Island cotton
Sizes: XS-XL



01 white 451 clematis blue



286-4141 Pants Cropped
100% Sea Island cotton
Sizes: XS-XL



01 white 451 clematis blue



286-4158 Robe Short
100% Sea Island cotton
Sizes: XS-XL



01 white 451 clematis blue





MAUDE PRIVÉ / HERITAGE OF STYLE



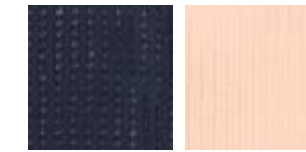
260-3056 Spaghetti Top
100% cotton
Sizes: S-XL



202 navy 33 blush



260-3057 Top
100% cotton
Sizes: S-XL



202 navy 33 blush



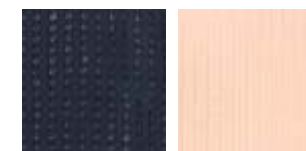
260-3074 Negligé
100% cotton
Sizes: S-XL



202 navy 33 blush



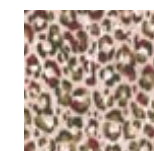
260-3060 Hipster
100% cotton
Sizes: S-XL



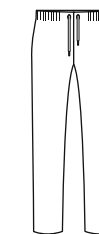
202 navy 33 blush



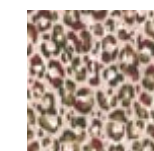
4690-39053 Sleepshirt Long Sleeve
100% cotton
Sizes: XS-XL



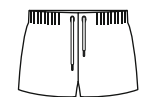
922 leo



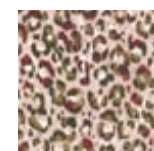
4690-36940 Pants Long
100% cotton
Sizes: XS-XL



922 leo



4690-36950 Shorty
100% cotton
Sizes: XS-XL

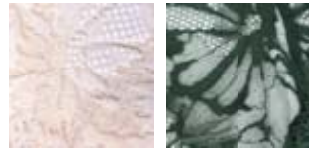


922 leo

SENSUAL FASHION



903-3063 Bralette
94% polyamide / 6% elastane
Sizes: XS-L



216 blush 698 harbor green



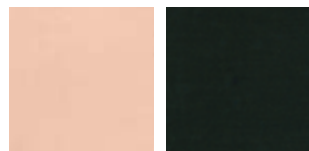
903-3025 Hipster
94% polyamide / 6% elastane
Sizes: XS-L



216 blush 698 harbor green



762-3019 Spaghetti Top
80% Modal (MicroModal) / 14% silk /
6% elastane
Sizes: XS-XL



216 blush 698 harbor green



762-3020 Top
80% Modal (MicroModal) / 14% silk /
6% elastane
Sizes: XS-XL



216 blush 698 harbor green



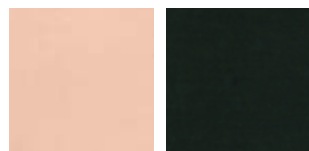
762-3062 Shirt Short Sleeve
80% Modal (MicroModal) / 14% silk /
6% elastane
Sizes: XS-XL



216 blush 698 harbor green



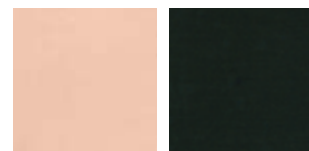
762-3022 Body
80% Modal (MicroModal) / 14% silk /
6% elastane
Sizes: XS-L



216 blush 698 harbor green



762-3023 Briefs
80% Modal (MicroModal) / 14% silk /
6% elastane
Sizes: XS-XL



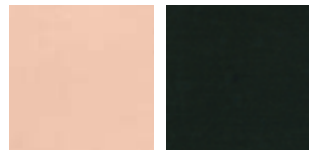
216 blush 698 harbor green



SENSUAL FASHION



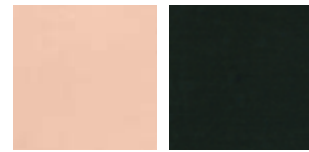
762-4094 Spaghetti Nighty
80% Modal (MicroModal) / 14% silk /
6% elastane
Sizes: XS-L



216 blush 698 harbor green



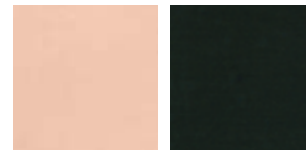
762-4142 Sleepshirt Long Sleeve
80% Modal (MicroModal) / 14% silk /
6% elastane
Sizes: XS-XL



216 blush 698 harbor green



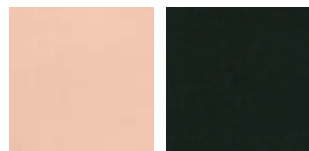
762-4144 Pyjama Long
80% Modal (MicroModal) / 14% silk /
6% elastane
Sizes: XS-XL



216 blush 698 harbor green



762-4096 Robe Short
80% Modal (MicroModal) / 14% silk /
6% elastane
Sizes: XS-XL



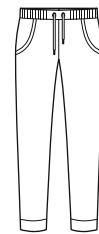
216 blush 698 harbor green



762-4143 Shirt 7/8 Sleeve
80% Modal (MicroModal) / 14% silk /
6% elastane
Sizes: XS-XL



216 blush 698 harbor green



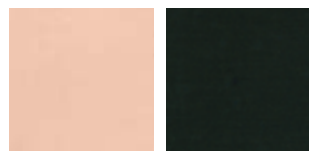
762-3955 Pants Long
80% Modal (MicroModal) / 14% silk /
6% elastane
Sizes: XS-XL



216 blush 698 harbor green



762-4146 Shorty
80% Modal (MicroModal) / 14% silk /
6% elastane
Sizes: XS-XL

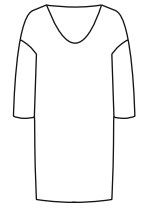
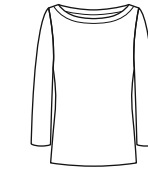
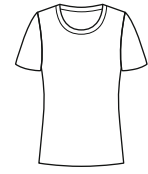


216 blush 698 harbor green



PURENESS / HERITAGE OF STYLE

PURENESS



700-3440 Top
95% Modal (MicroModal) / 5% elastane
Sizes: S-XL

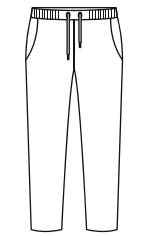
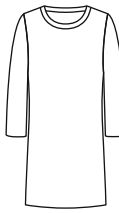
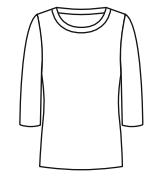
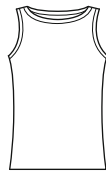
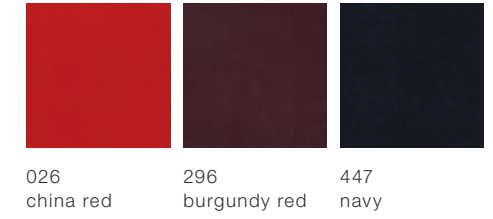
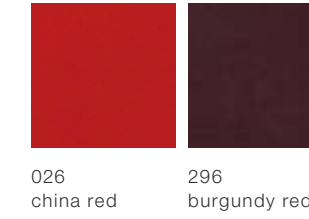
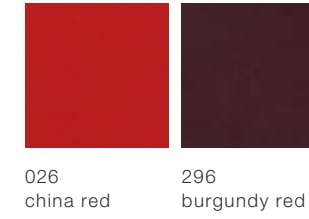
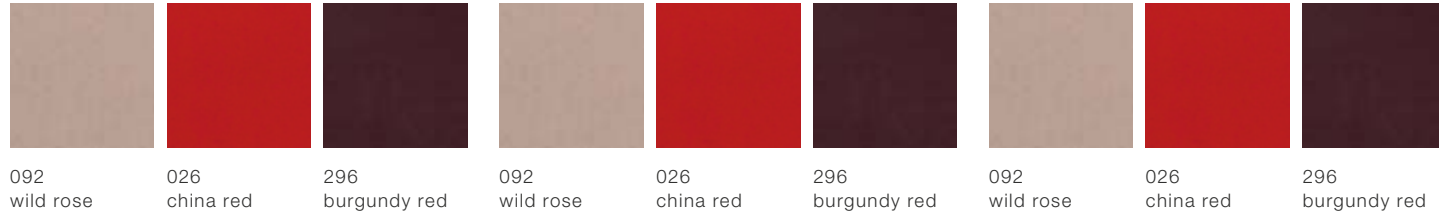
700-3450 Shirt Short Sleeve
95% Modal (MicroModal) / 5% elastane
Sizes: S-XL

700-3425 Hipster
95% Modal (MicroModal) / 5% elastane
Sizes: S-XL

700-3980 Top
95% Modal (MicroModal) / 5% elastane
Sizes: S-XL

700-4075 Shirt Long Sleeve
95% Modal (MicroModal) / 5% elastane
Sizes: S-XL

700-4156 Short Dress 3/4 Sleeve
95% Modal (MicroModal) / 5% elastane
Sizes: S-XL



5185-3980 Top
95% Modal (MicroModal) / 5% elastane
Sizes: S-XL

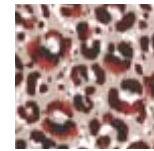
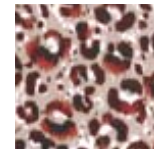
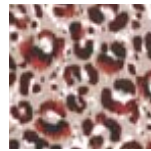
5185-4152 Shirt 3/4 Sleeve
95% Modal (MicroModal) / 5% elastane
Sizes: S-XL

5185-4153 Short Dress 3/4 Sleeve
95% Modal (MicroModal) / 5% elastane
Sizes: S-XL

700-3981 Loop Shirt Long Sleeve
95% Modal (MicroModal) / 5% elastane
Sizes: S-XL

700-3853 Pants Long
95% Modal (MicroModal) / 5% elastane
Sizes: S-XL

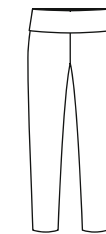
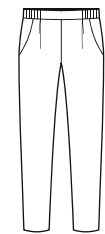
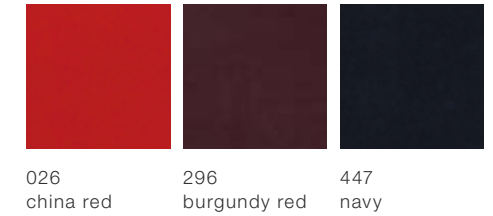
700-3854 Pants Long
95% Modal (MicroModal) / 5% elastane
Sizes: S-XL



924
leo

924
leo

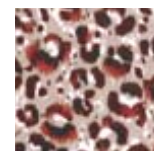
924
leo



5185-4154 Shorty
95% Modal (MicroModal) / 5% elastane
Sizes: S-XL

5185-4155 Pants Long
95% Modal (MicroModal) / 5% elastane
Sizes: S-XL

700-2724 Pants Long
95% Modal (MicroModal) / 5% elastane
Sizes: S-XL



924
leo

924
leo

026 china red 296 burgundy red

DELIVERY WINDOW 2: 17.08.2020

Order deadline: 28.02.2020*

Daywear p. 18/19/22/24/25

Nightwear p. 19/21/24

Loungewear p. 18/21

* Später eingehende Bestellungen werden unter Vorbehalt angenommen/Orders received after this date will be accepted under reserve.

RICHELIEU / HERITAGE OF STYLE



207-2800 Spaghetti Top
100% cotton
Sizes: S-L



207-2801 Top
100% cotton
Sizes: S-L



207-2802 Negligé
100% cotton
Sizes: S-L



Essential
86
black



Essential
86
black



Essential
86
black



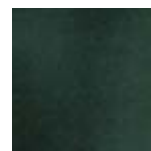
207-2804 Briefs
100% cotton
Sizes: S-L



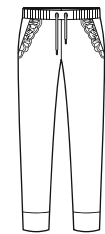
Essential
86
black



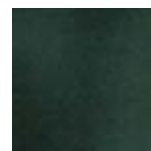
5112-39014 Jacket
40% cotton / 40% polyamide /
20% polyester
Sizes: XS-XL



698
harbor green



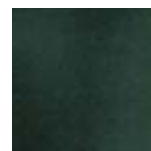
5112-39015 Pants Long
40% cotton / 40% polyamide /
20% polyester
Sizes: XS-XL



698
harbor green



5112-39016 Robe Long
40% cotton / 40% polyamide /
20% polyester
Sizes: XS-XL



698
harbor green

HERITAGE OF STYLE



903-3025 Hipster
94% polyamide / 6% elastane
Sizes: XS-L

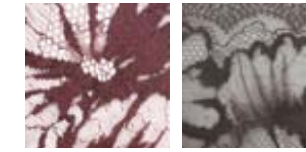


185
plum

594
dark shadow

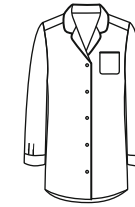


903-3079 Bralette
94% polyamide / 6% elastane
Sizes: XS-L



185
plum

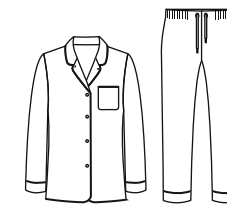
594
dark shadow



4600-39054 Sleepshirt Long Sleeve
80% cotton, 20% wool
Sizes: XS-XL



101
eggshell



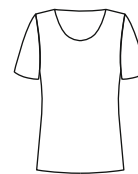
4600-39074 Pyjama Cropped 7/8 Sleeve
80% cotton, 20% wool
Sizes: XS-XL



101
eggshell



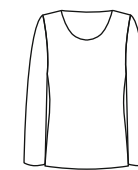
SUPREME GREEN COTTON / HERITAGE OF STYLE



3460-4120 Shirt Short Sleeve
100% cotton
Sizes: XS-XL



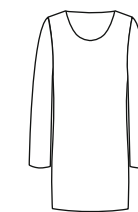
861 poppy red 698 harbor green



3460-4148 Shirt Long Sleeve
100% cotton
Sizes: XS-XL



861 poppy red 698 harbor green



3460-4149 Sleepshirt Long Sleeve
100% cotton
Sizes: XS-XL



861 poppy red 698 harbor green



3460-4119 Pants Cropped
100% cotton
Sizes: XS-XL



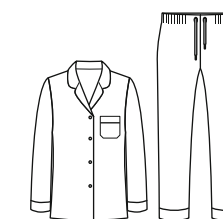
861 poppy red 698 harbor green



5143-39051 Sleepshirt Long Sleeve
100% cotton
Sizes: XS-XL



873 red



5143-36800 Pyjama Cropped 7/8 Sleeve
100% cotton
Sizes: XS-XL



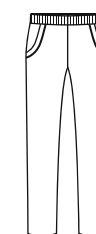
873 red



5143-38217 Robe Short
100% cotton
Sizes: XS-XL



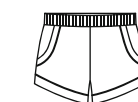
873 red



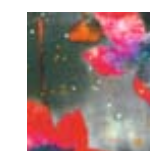
5143-39028 Pants Long
100% cotton
Sizes: XS-XL



873 red



5143-39080 Shorty
100% cotton
Sizes: XS-XL

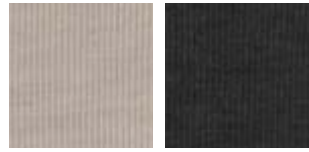


873 red

MOMENTS OF OPULENCE



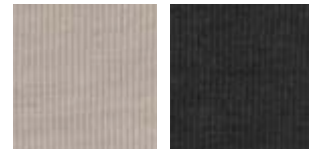
370-3068 Top
70% wool / 30% silk
Sizes: S-L



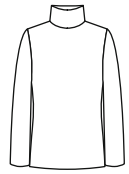
255 598
taupe mélange phantom



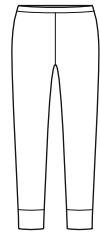
370-3070 Shirt Long Sleeve
70% wool / 30% silk
Sizes: S-L



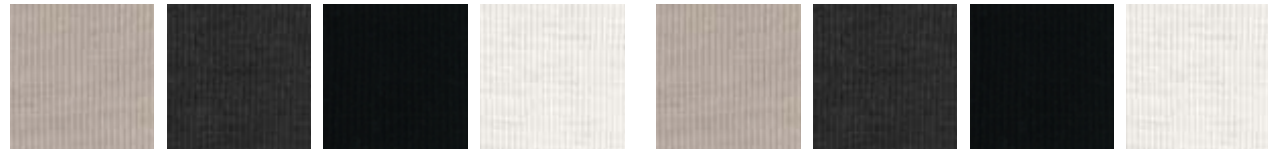
255 598
taupe mélange phantom



370-2947 Roll Neck Long Sleeve
70% wool / 30% silk
Sizes: S-L



370-2948 Leggings
70% wool / 30% silk
Sizes: S-L



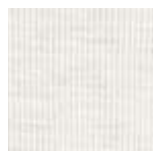
255 598 086 020 255 598 086 020
taupe mélange phantom black écreu taupe mélange phantom black écreu



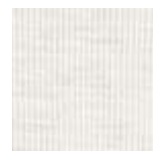
370-2944 Top
70% wool / 30% silk
Sizes: S-L



370-2945 Shirt Long Sleeve
70% wool / 30% silk
Sizes: S-L



020
écreu



020
écreu





HERITAGE OF STYLE



382-3071 Spaghetti Top
70% wool / 30% silk
Sizes: S-L



083 black/écru
086 black



382-3072 Shirt Long Sleeve
70% wool / 30% silk
Sizes: S-L



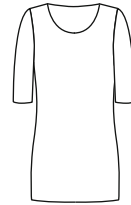
083 black/écru
086 black



382-3073 Briefs
70% wool / 30% silk
Sizes: S-L



083 black/écru
086 black



382-4157 Sleepshirt 3/4 Sleeve
70% wool / 30% silk
Sizes: S-L



086 black



808-3075 Spaghetti Top
50% silk / 50% cotton
Sizes: S-XL



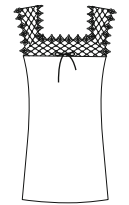
086 black
026 china red



808-3076 Top
50% silk / 50% cotton
Sizes: S-XL



086 black
026 china red



808-3077 Negligé
50% silk / 50% cotton
Sizes: S-XL



086 black
026 china red



808-3078 Briefs
50% silk / 50% cotton
Sizes: S-XL



086 black
026 china red

HOMMAGE À PAULINE

DELIVERY WINDOW 3: 28.10.2020

Order deadline: 28.02.2020

COMMUNICATION TOOLS



Laminated images for display frames
POS59001
Poster 70x100 cm
POS59006



Laminated images for display frames
POS59002
Poster 70x100 cm
POS59007



Laminated images for display frames
POS59003
Poster 70x100 cm
POS59008



Laminated images for display frames
POS59004
Poster 70x100 cm
POS59009



Laminated images for display frames
POS59010
Poster 70x100 cm
POS59010

VISIT US AT THE FOLLOWING TRADE FAIRS

Please find all information on our website

SHOWROOMS BY APPOINTMENT

Switzerland, Aarburg
Zimmerli Textil AG
Feldstrasse 25
CH-4663 Aarburg
T +41 62 787 40 00
info@zimmerli.com

Switzerland, Zurich
TMC, Showroom 667
Thurgauerstrasse 117
CH-8152 Glattpark (Opfikon)
T +41 62 787 40 00
info@zimmerli.com

Italy, Milano
Zimmerli Showroom
Andrea Ferri
via Tortona 37 – unit C 04 (Building 5)
IT-20144 Milano
M +39 335 6699541
info@zimmerli.com

Germany, München
Zimmerli x Eton Showroom
Reinhard Schürenberg
Wilhelm-Wagenfeld-Strasse 16
1. OG
D-80807 München
M +49 171 888 8490
info@zimmerli.com

China, Shanghai
Zimmerli (Shanghai) Trading Co., Ltd.
Room 203, the Headquarters Building
No. 168, Middle Xizang Road
Shanghai, 200001
P.R. China
T +86 (0) 21 6360 2366
info@zimmerli.cn

INTERNATIONAL DISTRIBUTION PARTNERS

Switzerland/France
Sylvia Zankl
Feldstrasse 25
CH-4663 Aarburg
T +41 62 787 40 04
M +41 79 663 10 05
s.zankl@zimmerli.com

Germany
Andrew Brett
Feldstrasse 25
CH-4663 Aarburg
T +41 62 787 40 00
M +49 151 52500 673
a.brett@zimmerli.com

Great Britain
Andrew Brett
Feldstrasse 25
CH-4663 Aarburg
T +41 62 787 40 00
M +49 151 52500 673
a.brett@zimmerli.com

USA
Andrea S. Perrone
73 Meadow Street,
US-Tarrytown, NY 10591
T +1 917 442-0803
a.perrone@zimmerli.com

Canada
Joyce Douek
Idea d'Italia Inc.
3950 Hickmore, Suite 101
Montreal, Quebec
CA-H4T 1K2
T +1 514 271 18 81
F +1 514 271 92 88
M +1 514 578 30 72
joyce@ideadiitalia.com

Belgium
Clara Rocco
Rue de la Vénérie 5
BE-1170 Watermael-Boitsfort
M +32 475 2309 07
c.rocco@zimmerli.com

Baden-Württemberg,
Hessen, Saarland,
Rheinland-Pfalz
Heidi Meyering
Weilnauer Strasse 32
DE-61276 Weilrod
T +49 6083 32 99427
M +49 172 940 36 00
h.meyering@zimmerli.com

Scandinavia
Osvic
Gorm Jensen
Lindegaardsvej 7
DK-2920 Charlottenlund
M +45 2830 3039
g.jensen@zimmerli.com

Russia
Andreas Frei
Feldstrasse 25
CH-4663 Aarburg
T +41 62 787 40 00
M +41 76 580 60 21
a.frei@zimmerli.com

Italy
Andrea Ferri
Via Tortona 37 – unit C 04 (Building 5)
IT-20144 Milano
M +39 335 6699541
a.ferri@zimmerli.com

Nordrhein-Westfalen
Thomas Kracht
Rodderweg 6A
DE-50999 Köln
T +49 2236 38 19 45
F +49 2236 38 19 46
M +49 776 73 77
t.kracht@zimmerli.com

Spain
Garetex 28 SL
Laura Ortega Pérez
Tuset, 25 Atico 7a
ES-Barcelona 08006
T +34 93 209 94 54
garetex@garetex.es

**Lebanon/Saudi Arabia/
U.A.E./Qatar/Bahrain**
Gédéon & Co. S.A.R.L.
Antelias Romanos Center
Bloc C – 6th Floor
P.O. Box 166 658
LB-Beirut
T +961 4 523 363
F +961 4 52 00 75
M +961 325 1817
gedeon@dm.net.lb



Zimmerli Textil AG / Feldstrasse 25 / CH-4663 Aarburg
T +41 62 787 40 00 / F +41 62 787 40 01 / info@zimmerli.com

www.zimmerli.com